



MONTHLY MEMBERSHIP PROGRESS REPORT

District 16 N

Results as of: 04/30/2019

GMT: MAHESH CHITNIS

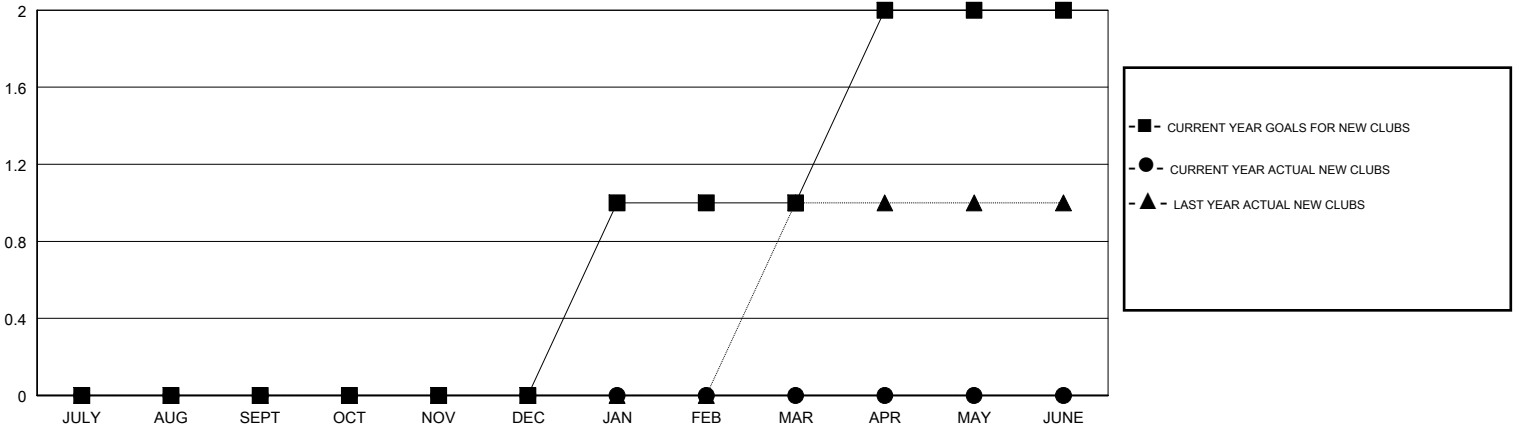
LOCATION NEW JERSEY

GMT CA

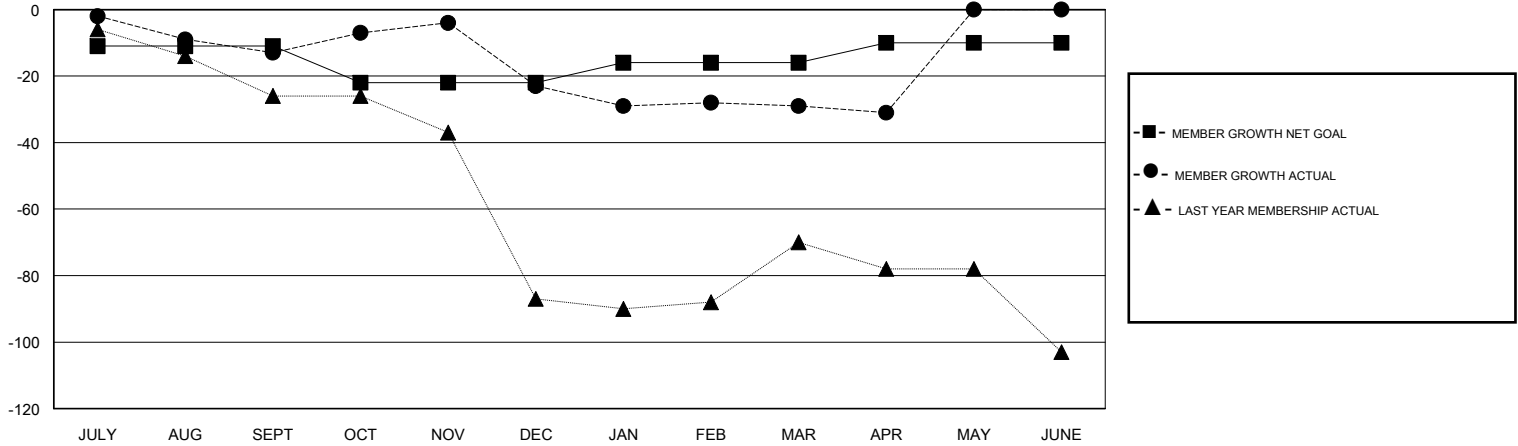
Clubs			
RESULTS FOR 2018-2019			
QUARTER	NEW CLUB GOAL	NEW CLUBS	DROPPED CLUBS
JULY/AUG/SEPT	0	0	0
OCT/NOV/DEC	0	0	0
JAN/FEB/MAR	1	0	0
APR/MAY/JUNE	1	0	0

Members			
RESULTS FOR 2018-2019			
QUARTER	MEMBER GROWTH NET GOAL	MEMBER GROWTH ACTUAL	DROPPED MEMBERS ACTUAL (including transfers)
JULY/AUG/SEPT	-11	24	32
OCT/NOV/DEC	-11	29	37
JAN/FEB/MAR	6	14	20
APR/MAY/JUNE	6	3	5

GOALS AND ACTUAL NEW CLUBS CUMULATIVE



GOALS AND ACTUAL MEMBERS CUMULATIVE



DROPPED CLUBS: 0	27 CLUBS OF 59 ADDED 1 OR MORE NEW MEMBERS	<u>GENDER DISTRIBUTION</u> MALE 1,022 (72.18%) FEMALE 394 (27.82%) Women Percentage Fiscal Year Goal: 35%
<u>DROPPED MEMBERS</u> DECEASED 18 CLUB CANCELLED 0 OTHER 76 TOTAL 94	CLICK HERE FOR CUMULATIVE MEMBERSHIP DATA	TOTAL FAMILY UNIT MEMBERS 217 FAMILY MEMBERS PAYING HALF DUES 112